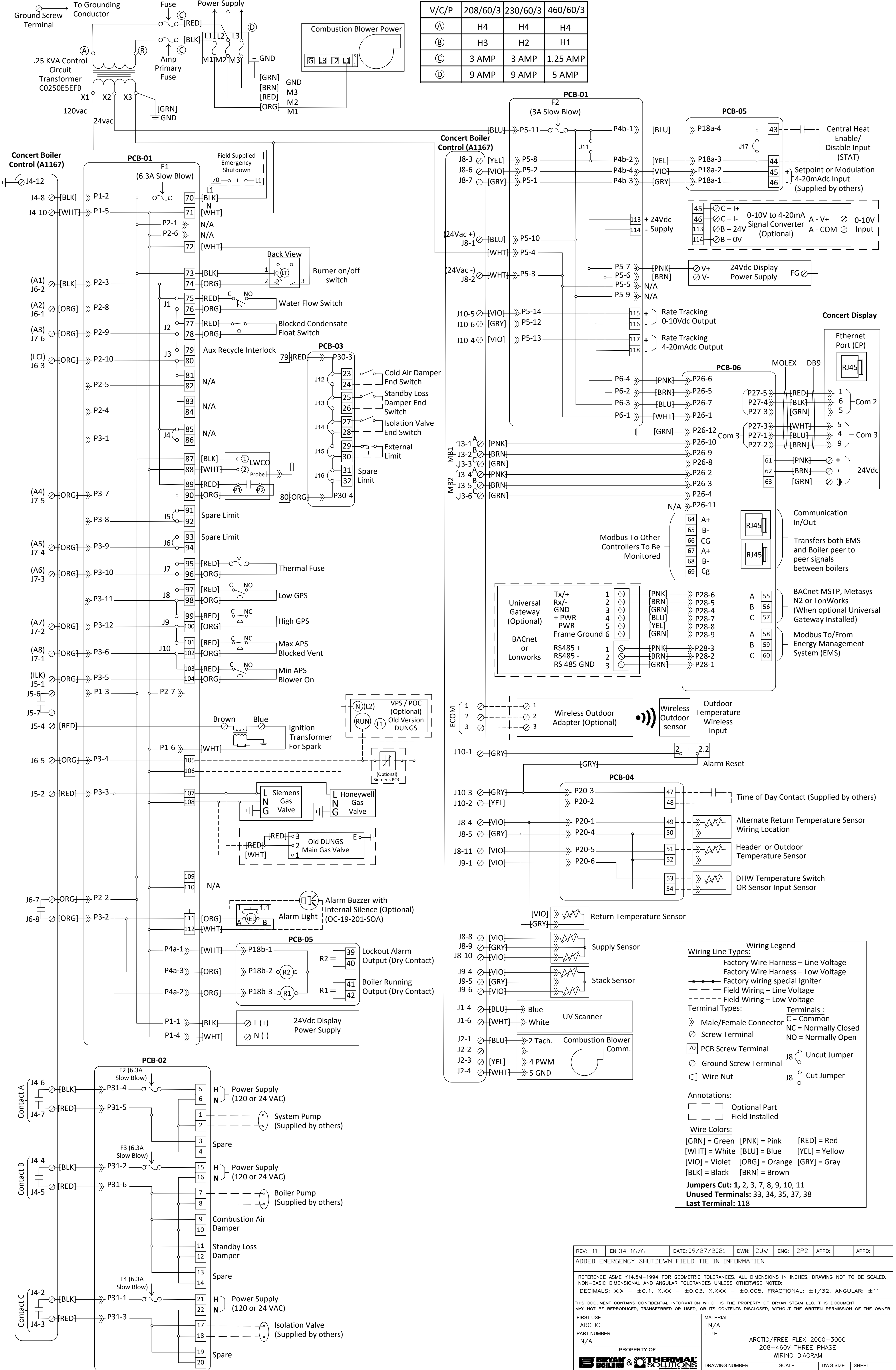


Boiler must be grounded in accordance with ANSI National Electric Code.

**IMPORTANT:** The wiring shown for devices supplied and installed by others is suggested only. Certification of, and responsibility for the correctness of the wiring is the responsibility of the supplier of these devices. Bryan Steam LLC accepts no responsibility for the correctness or safety or execution of this wiring or of the operation of such devices.

V/C/P	208/60/3	230/60/3	460/60/3
(A)	H4	H4	H4
(B)	H3	H2	H1
(C)	3 AMP	3 AMP	1.25 AMP
(D)	9 AMP	9 AMP	5 AMP



**Wiring Legend**

**Wiring Line Types:**

- Factory Wire Harness – Line Voltage
- Factory Wire Harness – Low Voltage
- Factory wiring special Igniter
- Field Wiring – Line Voltage
- Field Wiring – Low Voltage

**Terminal Types:**

- Male/Female Connector
- Screw Terminal
- PCB Screw Terminal
- Ground Screw Terminal
- Wire Nut

**Terminals:**

- C = Common
- NC = Normally Closed
- NO = Normally Open
- 88 = Uncut Jumper
- 88 = Cut Jumper

**Annotations:**

- Optional Part
- Field Installed

**Wire Colors:**

- [GRN] = Green [PNK] = Pink [RED] = Red
- [WHT] = White [BLU] = Blue [YEL] = Yellow
- [VIO] = Violet [ORG] = Orange [GRY] = Gray
- [BLK] = Black [BRN] = Brown

**Jumpers Cut:** 1, 2, 3, 7, 8, 9, 10, 11  
**Unused Terminals:** 33, 34, 35, 37, 38  
**Last Terminal:** 118

REV: 11	EN: 34-1676	DATE: 09/27/2021	DWN: CJW	ENG: SPS	APPD:	APPD:
ADDED EMERGENCY SHUTDOWN FIELD TIE IN INFORMATION						
REFERENCE ASME Y14.5M-1994 FOR GEOMETRIC TOLERANCES. ALL DIMENSIONS IN INCHES. DRAWING NOT TO BE SCALED. NON-BASIC DIMENSIONAL AND ANGULAR TOLERANCES UNLESS OTHERWISE NOTED: DECIMALS: X.X - ±0.1, X.XX - ±0.03, X.XXX - ±0.005. FRACTIONAL: ±1/32. ANGULAR: ±1°						
THIS DOCUMENT CONTAINS CONFIDENTIAL INFORMATION WHICH IS THE PROPERTY OF BRYAN STEAM LLC. THIS DOCUMENT MAY NOT BE REPRODUCED, TRANSFERRED OR USED, OR ITS CONTENTS DISCLOSED, WITHOUT THE WRITTEN PERMISSION OF THE OWNER.						
FIRST USE ARCTIC	MATERIAL N/A			TITLE ARCTIC/FREE FLEX 2000-3000 208-460V THREE PHASE WIRING DIAGRAM		
PART NUMBER N/A	PROPERTY OF <b>BRYAN &amp; THERMAL SOLUTIONS</b>			DRAWING NUMBER WD-868	SCALE NONE	DWG SIZE D
SHEET 1 OF 1						